

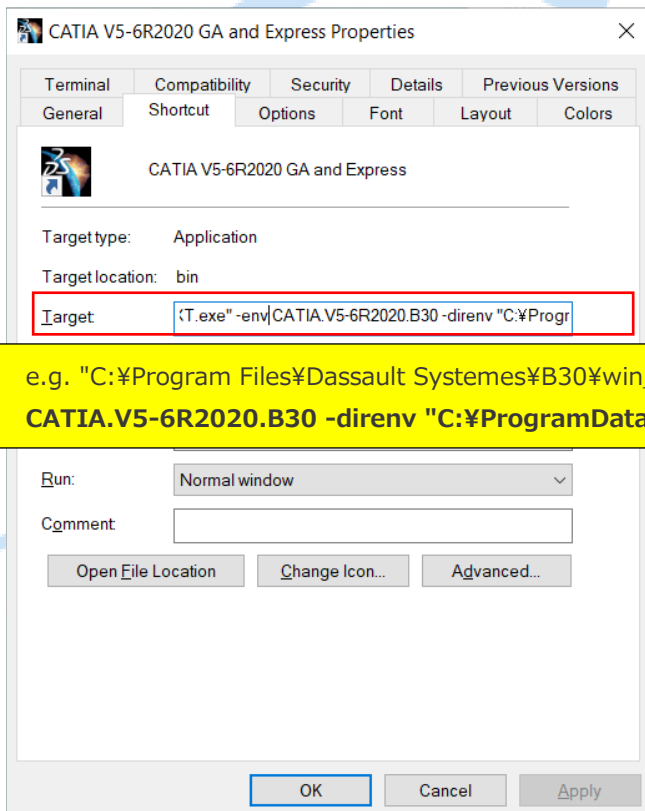
Running CATIA as Admin mode

1. Overview

As you run CATIA application as admin mode, you can setup reference settings that can be applied to all users CATIA environment. All settings you setup in the admin mode go to a folder defined in "Reference Settings" path parameter in CATIA "-env" text file in CATIA "-direnv" folder.

2. Preparation for Admin mode

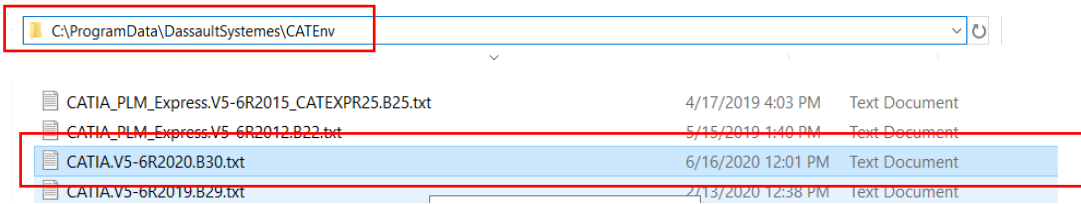
Right click on CATIA shortcut on your desktop and confirm about "-direnv" folder and "env" text file in Target parameter.



e.g. `"C:\Program Files\Dassault Systemes\B30\win_b64\code\bin\CATSTART.exe" -run "CNEXT.exe" -env CATIA.V5-6R2020.B30 -direnv "C:\ProgramData\DassaultSystemes\CATEnv" -nowindow`

VISION
TECHNOLOGY, INC.

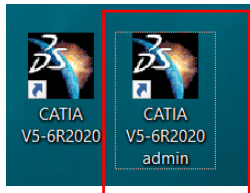
Go to "direnv" folder in the Target parameter above and make sure you have a reference setting path is set in the "env" txt file.



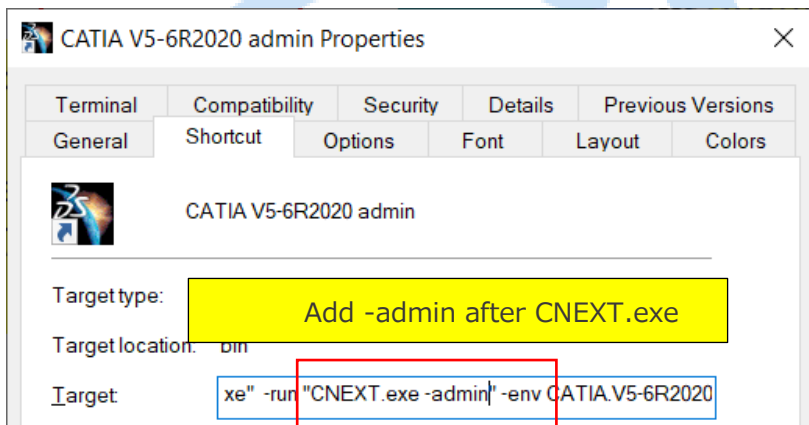
```
!-----  
! DASSAULT SYSTEMES - V5 ENVIRONMENT FILE  
!-----  
! MODE : Global  
! TYPE : CATIA  
! TMSTMP : 1592323295  
! ARGS : -cs CATIA -a global -icon yes -menu yes -tools  
!-----  
  
CATInstallPath=C:\Program Files\Dassault Systemes\B30\win_b64  
CATDLLPath=C:\Program Files\Dassault Systemes\B30\win_b64\code\bin  
CATICPath=C:\Program Files\Dassault Systemes\B30\win_b64\code\productIC  
CATCommandPath=C:\Program Files\Dassault Systemes\B30\win_b64\code\command  
CATDictionaryPath=C:\Program Files\Dassault Systemes\B30\win_b64\code\dictionary  
CATDocView=C:\Program Files\Dassault Systemes\B30\win_b64\doc  
CATReffilesPath=C:\Program Files\Dassault Systemes\B30\win_b64\reffiles  
CATFontPath=C:\Program Files\Dassault Systemes\B30\win_b64\resources\fonts  
CATGalaxyPath=C:\Program Files\Dassault Systemes\B30\win_b64\resources\galaxy  
CATGraphicPath=C:\Program Files\Dassault Systemes\B30\win_b64\resources\graphic;C:\Program Files\Dassault  
Systemes\B30\win_b64\resources\graphic\icons;C:\Program Files\Dassault Systemes\B30\win_b64\resources\graphic  
\figures;C:\Program Files\Dassault Systemes\B30\win_b64\resources\graphic\splashscreens;C:\Program Files  
\Dassault Systemes\B30\win_b64\resources\graphic\symbols;C:\Program Files\Dassault Systemes  
\B30\win_b64\resources\graphic\textures  
CATMsgCatalogPath=C:\Program Files\Dassault Systemes\B30\win_b64\resources\msgcatalog  
CATFeatureCatalogPath=C:\Program Files\Dassault Systemes\B30\win_b64\resources\featurecatalog  
CATDefaultCollectionStandard=C:\Program Files\Dassault Systemes\B30\win_b64\resources\standard  
CATKnowledgePath=C:\Program Files\Dassault Systemes\B30\win_b64\resources\knowledge  
  
e.g. Reference Setting Path is set in "C:\Temp\CATRefSettings".  
  
CATReconcilePath=  
CATReferenceSettingPath=C:\Temp\CATRefSettings  
CATUserSettingPath=CSTDI APPDATA\DassaultSystemes\CATSettings
```

3. Creation for CATIA Admin mode icon

Copy the CATIA icon you want to run as admin mode on your desktop and rename it to another name. (e.g. CATIA V5-6R2020 admin)



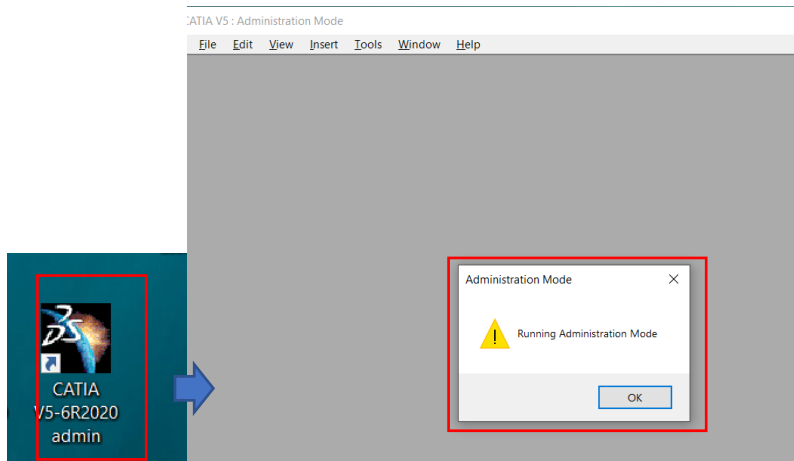
Right click on the CATIA icon you created and go to property and add "-admin" after CNEXT.exe.



GLOBAL VISION
TECHNOLOGY, INC.

4. Running CATIA as Admin mode

Double click the icon you created in Step 2 above and CATIA is run as Admin mode. Once you setup parameters in Tools – Options and so on, all settings will be stored in CATIA Reference Settings and the settings are shared with all users.



GLOBAL VISION
TECHNOLOGY, INC.